



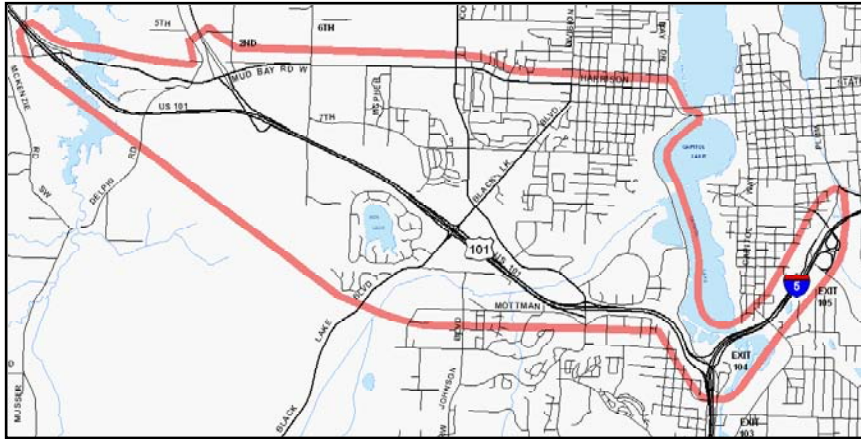
Washington State
Department of Transportation



City of
OLYMPIA

West Olympia Access Study

February 2007



INFORMATION:

Kathy McCormick
West Olympia Access Study
2424 Heritage Court SW Ste. A
Olympia, WA 98502
(360) 956-7575
e-mail: westolympia@wsdot.wa.gov

For information about this project:
www.trpc.org/westolympia

or the Washington State Department of Transportation's
website at: www.wsdot.wa.gov

WE NEED TO HEAR FROM YOU

Your participation is key to this study.

The City of Olympia and Washington State Department of Transportation (WSDOT) are partnering on a joint study of city street and state highway systems on the west side of Olympia. The study will evaluate how well the systems work together to support the diverse transportation needs of the west side, now and in the future.

What's the problem?

Current street and highway networks on Olympia's west side hinder timely emergency response, efficient transit service, and pedestrian and bicycle access. We need to more evenly distribute traffic, and provide access to planned growth areas.

What's the study goal?

The study will result in a package of improvements and programs to meet the future mobility needs of transit, bike riders, walkers, cars and trucks traveling to and through Olympia's west side.

Join us at one of the Public Workshops to:

- Learn about this study.
- Share your ideas about west side transportation issues and problems.
- Identify principles to be used to evaluate alternatives.

Wednesday, March 7, 2007

6:30 to 8:30 p.m.

Jefferson Middle School
2200 Conger, Olympia

-- OR --

Thursday, March 15, 2007

6:30 to 8:30 p.m.

Evergreen Christian Community
1000 Black Lake Blvd SW, Olympia

(Two identical workshops are planned for your convenience.)

Stay Informed!

If you would like to receive project newsletters or notice of future workshops, please contact us with your email or mailing address:

westolympia@wsdot.wa.gov or
(360) 956-7575

**MAKING EVERY
DOLLAR COUNT.**

Americans with Disabilities Act (ADA) Information: Individuals requiring reasonable accommodations may request written materials in alternate formats, sign language interpreters, physical accessibility accommodations, or other reasonable accommodations by contacting Debbie Clemen, WSDOT, at (360) 704-3204, one week prior to the meeting date shown on this notice. Persons who are deaf or hard of hearing may contact Debbie Clemen through the Washington Relay Service at 7-1-1.

Civil Rights Act, Title VI Statement to the Public: Washington State Department of Transportation (WSDOT) hereby gives public notice that it is the policy of the department to assure full compliance with Title VI of the Civil Rights Act of 1964, the Civil Rights Restoration Act of 1987, and related statutes and regulations in all programs and activities. Persons wishing information may call the WSDOT Office of Equal Opportunity at (360) 705-7098.

West Olympia Access Study



Washington State
Department of Transportation

WE WANT TO HEAR FROM YOU

- Learn about this study.
- Share your ideas about west side transportation issues and problems.
- Identify principles to be used to evaluate alternatives.

Wednesday, March 7 - or - **Thursday, March 15**

6:30 to 8:30 p.m.

6:30 - 8:30 p.m.

Jefferson Middle School
2200 Conger, Olympia

Evergreen Christian Community
1000 Black Lake Blvd SW, Olympia

(Two identical workshops are planned for your convenience.)

CONTACT US:

Kathy McCormick
West Olympia Access Study
2424 Heritage Court SW Ste. A
Olympia, WA 98502
(360) 956-7575
e-mail: westolympia@wsdot.wa.gov

For information about this project:
www.trpc.org/westolympia

or the Washington State Department of Transportation's
website at: www.wsdot.wa.gov

ECRWSS
POSTAL CUSTOMER

PRSR STD
U.S. POSTAGE
PAID
Olympia, WA
Permit No. 78

West Olympia Access Study
2424 Heritage Court SW, Ste A
Olympia, WA 98502-6031