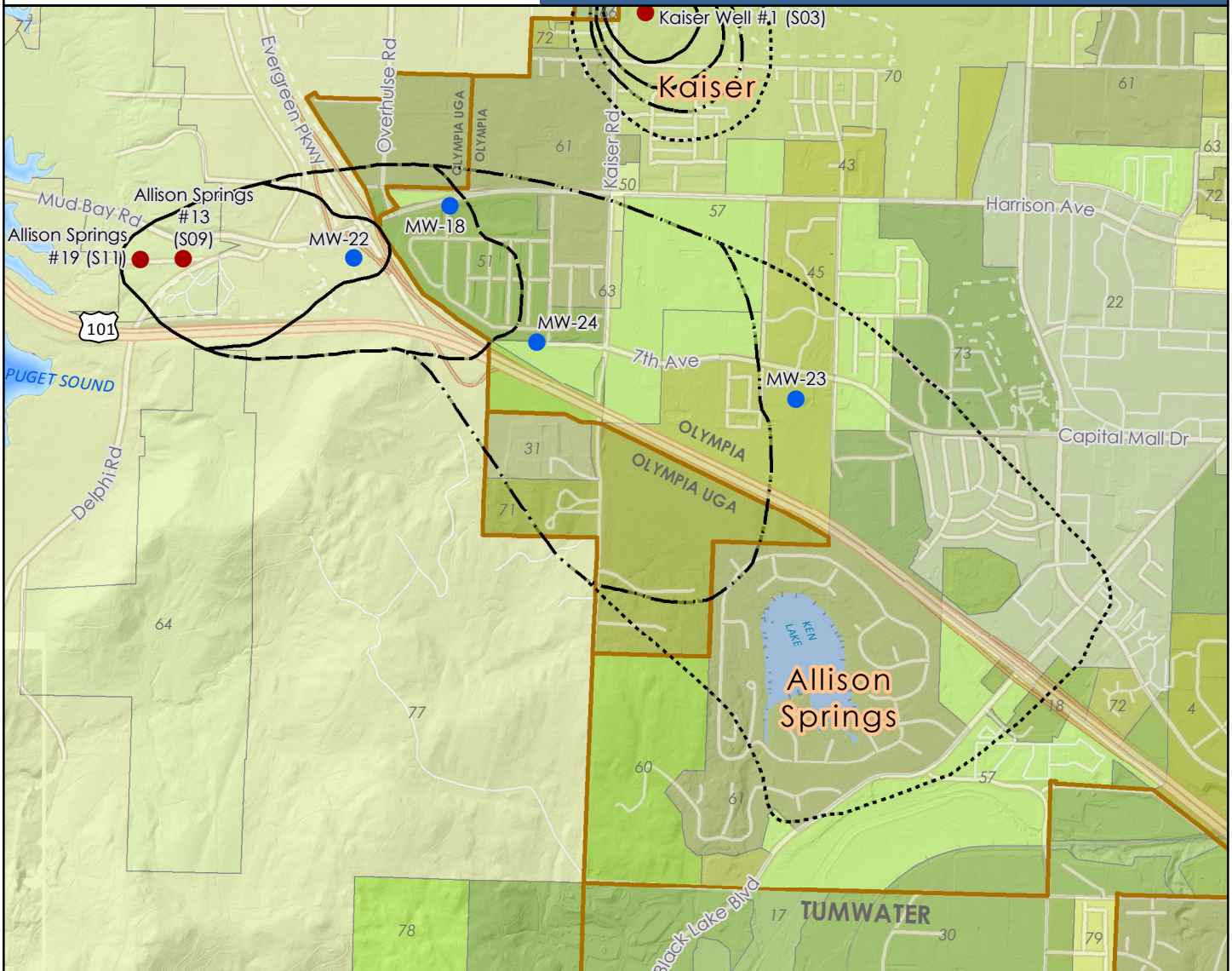


2015 - 2020 Water System Plan
Drinking Water Protection Area

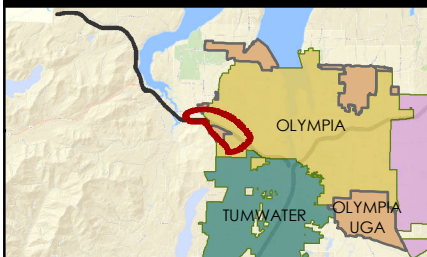
City of Olympia | Capital of Washington State



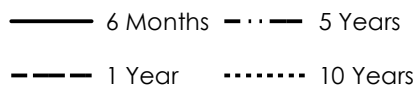
Vicinity Map



Allison Springs



Wellhead Protection Area
 Groundwater Time-of-Travel Zones



- Well Types
- Source Well
 - Monitoring Well - Water Quality and Levels

Zoning	4, AUTO SERVICES	45, MEDICAL SERVICE	66, RESIDENTIAL 1 UNIT PER 5 ACRE
	17, GREEN BELT	50, NEIGHBORHOOD RETAIL	70, RESIDENTIAL LOW IMPACT
	18, GENERAL COMMERCIAL	51, NEIGHBORHOOD VILLAGE	71, RESIDENTIAL LOW IMPACT 2-4
	22, HIGH DENSITY CORRIDOR 3	57, PROFESSIONAL OFFICE/RESIDENTIAL	72, RESIDENTIAL MULTIFAMILY 18
	22, HIGH DENSITY CORRIDOR 4	60, SINGLE FAMILY RESIDENTIAL 4	73, RESIDENTIAL MULTIFAMILY 24 UNITS PER ACRE
	30, LIGHT INDUSTRIAL	61, RESIDENTIAL 4-8	77, RURAL RESIDENTIAL RESOURCE 1/5
	31, LIGHT INDUSTRIAL COMMERCIAL	63, RESIDENTIAL 6-12	78, SINGLE FAMILY LOW DENSITY RES. 4-7 UNITS
	43, MIXED RESIDENTIAL 10-18 UNITS	64, RURAL 1/10	79, SINGLE FAMILY MEDIUM DENSITY RES. 6-9 UNITS

The City of Olympia and its personnel cannot assure the accuracy, completeness, reliability, or suitability of this information for any particular purpose. The parcels, right-of-ways, utilities and structures depicted hereon are based on record information and aerial photos only. It is recommended the recipient and/or user field verify all information prior to use. The use of this data for purposes other than those for which they were created may yield inaccurate or misleading results. The recipient may not assert any proprietary rights to this information. The City of Olympia and its personnel neither accept nor assume liability or responsibility, whatsoever, for any activity involving this information with respect to lost profits, lost savings or any other consequential damages.

Figure 7.7
Allison Springs
 DWPA