

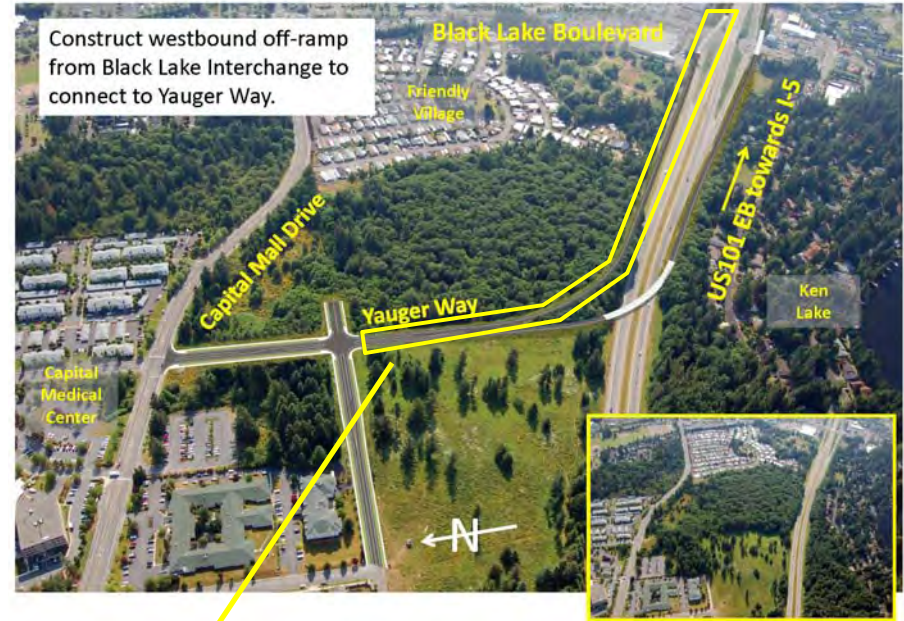
# Hybrid Alternative



Add westbound off-ramp and Eastbound on-ramp to US 101 from Kaiser Road.



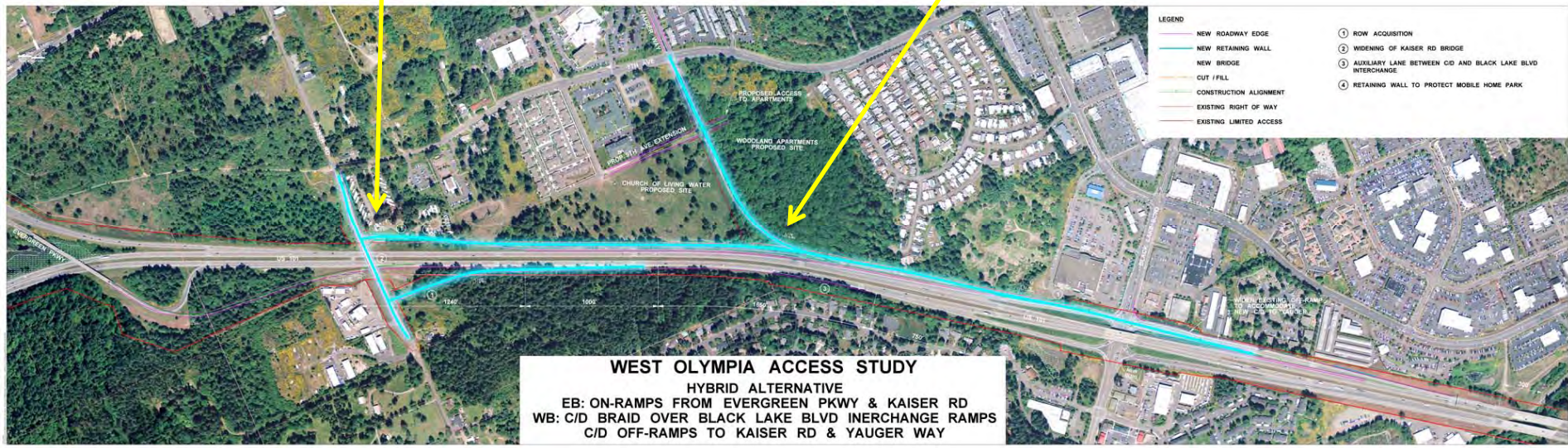
Kaiser - Existing



Construct westbound off-ramp from Black Lake Interchange to connect to Yauger Way.



Yauger Way Vicinity - Existing



- LEGEND**
- NEW ROADWAY EDGE
  - NEW RETAINING WALL
  - NEW BRIDGE
  - CUT / FILL
  - CONSTRUCTION ALIGNMENT
  - EXISTING RIGHT OF WAY
  - EXISTING LIMITED ACCESS
- ① ROW ACQUISITION
  - ② WIDENING OF KAISER RD BRIDGE
  - ③ AUXILIARY LANE BETWEEN C/D AND BLACK LAKE BLVD INTERCHANGE
  - ④ RETAINING WALL TO PROTECT MOBILE HOME PARK

**WEST OLYMPIA ACCESS STUDY**  
**HYBRID ALTERNATIVE**  
 EB: ON-RAMPS FROM EVERGREEN PKWY & KAISER RD  
 WB: C/D BRAID OVER BLACK LAKE BLVD INTERCHANGE RAMPS  
 C/D OFF-RAMPS TO KAISER RD & YAUGER WAY