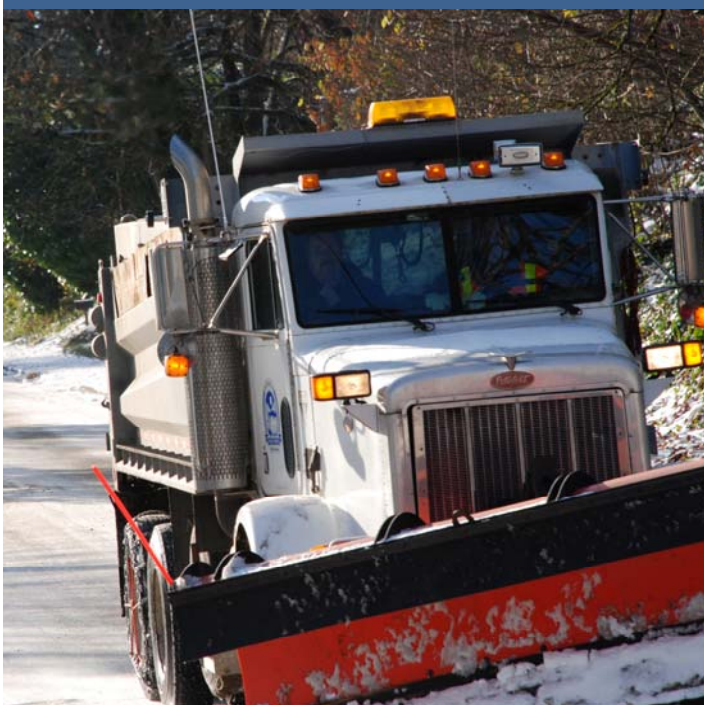




2017-2018 Snow and Ice Plan



Program Purpose Statement

The purpose of the Snow and Ice Control Program is to make every effort to keep City streets safe and passable during adverse weather conditions and storm events.

SNOW AND ICE CONTROL MANUAL PURPOSE STATEMENT

The purpose of the Snow and Ice Control Manual is to have employee information, shift schedules, guidelines and procedures, and route information all located in one place, which is easily accessible and readable for those who may need it during adverse weather conditions and storm events.

PROGRAM GOALS

1. To reduce life threatening and injury producing conditions.
2. To provide reasonable driving surfaces in winter road conditions.
3. To reduce the interruption of the economic life in the City of Olympia.

PROGRAM OBJECTIVES

1. To plow, sand and/or apply anti-icer to public roads during winter driving conditions.
2. To reduce accidents by treating hazardous locations.
3. To close off hills when safe conditions cannot be assured.
4. To improve the flow of traffic on City streets in the following priorities:
 - Primary routes – Arterials and Emergency Routes
 - Secondary routes – Major Collectors
 - Residential routes – Neighborhood Collectors and Local Access streets

TYPES OF TREATMENT

Anti-icing Agent

A salt brine anti-icing agent will be applied to established routes prior the start of a snow and/or ice event, when predicted. This will help keep snow and/or ice from sticking to roadway surfaces for easier removal. For a list of the established routes, see page 4.

Sand and/or Salt

Spreading sand and/or salt on hazardous areas, critical locations and primary routes is the first step in snow and ice control, with special attention given to hills, corners and intersections. Spot spreading of sand and/or salt is to only be used in critical or hazardous areas of secondary routes.

Plowing

Snow plows will begin working when snow starts to accumulate and they will work in order of the following priorities:

- Primary routes – Arterials and Emergency Routes
- Secondary routes – Major Collectors
- Residential routes – Neighborhood Collectors and Local Access streets

DETERMINATION OF OPERATIONAL NEED

Street Operations Supervisor and Lead will monitor weather forecast and put employees on notice of any upcoming snow and/or ice events. If snow and/or ice conditions are expected, the Street Operations Supervisor or Lead will have established anti-icing routes treated with anti-icer prior to the event.

If road conditions require attention after hours for minor or spotty conditions, the on-call duty person is dispatched first to treat hazardous areas. If, or when, the duty person is unable to accomplish the objectives, they will call the Street Operations Supervisor or Lead. Street Operations Supervisor and/or Lead will make all decisions on operational needs.

All Street Operations employees have been assigned a shift that they are responsible for in the event of needed coverage.

If a sudden or significant event begins, all available drivers will report to the Maintenance Center to get snow and ice control underway. The appropriate shift drivers will remain, and drivers for other shifts will go home and return at the start of their scheduled shift.

Once the Street Operations Supervisor determines the need, 24-hour coverage will be maintained as long as hazardous road conditions exist or are expected to continue.

SIGNIFICANT EVENTS COMMUNICATION POLICY

Once snow plows are dispatched, the Street Operations Supervisor or Lead will contact the Director of Transportation.

In addition, the Street Operations Supervisor and/or Lead will contact Communication Services regardless of the time (day or night) to update the City's website.

STORM CLEANUP

At the end of a snow and ice event and when there is no prediction of continued cold weather, the Street Operations Supervisor will schedule the street sweeper to begin cleaning priority routes. This will be done as soon as possible to reduce potential impacts to stormwater systems.

PUBLIC WORKS DISPATCH

During a snow and ice event, citizens and emergency dispatch (CapCom) call 753-8333 during normal business hours and after hours to report problems areas. Public Works Dispatch handles calls during the day and Techtell at night.

Program Purpose Guidelines and Operational Requirements

Levels of Priority

Priority 1 – Primary Routes: Once snow begins to accumulate, our first priority is Arterial streets, and an established list of hills and bridges. Snow plows remain on Primary Routes until they are safe for travel, or as long as snow continues to fall. See manual for list of streets and established routes, pages 19 through 24.

Priority 2 – Secondary Routes: Once primary routes, or Arterial streets, are safe for travel, plows will move to Major Collector streets. Plows will remain on Secondary Routes until they are safe for travel. If snow begins to fall at any time, plows will return to primary routes. See manual for list of streets and established routes, pages 19 through 24.

Priority 3 – Neighborhood Routes: Once primary and secondary routes are safe for travel, plows will move to Neighborhood Collectors. Plows will remain on Neighborhood Collectors until they are safe for travel. If snow begins to fall at any time, plows will return to primary routes. See manual for list of streets and established routes, pages 19 through 24.

As phone calls and requests are received, locations will be tracked on a spreadsheet and a map in the Street Operations Supervisor’s office or another designated area. This information will be used to help determine which areas need attention most. The Street Operations Supervisor and/or Lead will provide direction as needed.

Downtown Streets: Downtown streets are not part of a normal snow plow route, except around Intercity Transit transfer station. This is due to the fact that the Downtown does not experience as much snow accumulation on the roadway because of temperatures and traffic volumes. Also, there is no place to plow the snow without blocking on-street parking. In the event of an accumulation of 6” or more and an extended forecast of freezing conditions, the City will plow Downtown streets into the on-street parking stalls. The Parks, Arts and Recreation Department will be called upon to remove snow and open as many parking spaces as possible. This will be especially important between November 28 and December 25.

City-owned Property: During a snow and ice event with an accumulation of 6” or more, Water Resources staff will be called upon to clear the following locations:

- Criminal Justice Center (Old City Hall)
- Westside Police Station
- Westside Fire Station (apparatus driveway)
- Eastside Fire Station (apparatus driveway)
- Headquarters Fire Station (apparatus driveway)
- Fire Station #4, Stoll Road (apparatus driveway)
- Olympia Library
- The Olympia Center
- City-owned Parking Lots:
 - 4th and Washington
 - State and Washington
 - Artesian Lot
 - Yashiro Bridge
 - State and Capitol
 - Olympia and Franklin
 - State and Franklin
 - Simmons between 4th and 5th (next to old KFC)

ANTI-ICING ROUTES

West Side

- 4th and 5th Avenue Hills
- 4th and 5th Avenue Bridges
- Olympic Way, including roundabouts
- Brawne Hill
- Giles Avenue from Sherman to West Bay Drive
- Raft Hill/Schneider Hill
- Division, from 14th to Cooper Point
- Cooper Point, from 14th to 28th (only treat if necessary, between 14th and 20th)
- 20th, from Cooper Point to Road 65
- Road 65
- Goldcrest Drive, Medallion Loop to Cooper Point Road
- Yauger Way
- Capital Medical Center, Emergency Entrance off Yauger Way
- Harrison Avenue, from West Bay Drive to Yauger Way
- Kenyon, Harrison to Bush
- Black Lake Boulevard, from Harrison to SR101
- Ken Lake Hill
- Park Drive Hill
- Percival Bridge
- Lakeridge Drive Hill

East Side

- Capitol Way, 14th to Legion
- Capitol Way Bridge
- Capitol Way, Washington to 25th
- 14th Avenue, Capitol through Jefferson Roundabout
- 8th and Jefferson (For Transit)
- Union, Columbia to Eastside
- Henderson Boulevard
 - Plum to back entrance of MC
 - I-5 to Eskridge
 - Eskridge to YMCA (corners and intersections)
- Wheeler Hill at Eastside Street
- Eastside Street/22nd Avenue from Wheeler to Cain
- 22nd and Boulevard Roundabout
- Cain, 22nd to Eskridge (curves and hills)
- Log Cabin, North Street to Gainsborough
- Boulevard and Log Cabin roundabout
- Wiggins (curves)
- 18th and Fones roundabout
- 18th and Elizabeth Avenue (corners)
- Boulevard Road, 18th to Beacon
- Boulevard Road bridge
- Devoe Street, south of Pacific for 300 feet Pacific Avenue, Lilly to East Y
- Sleater-Kinney and I-5 overpass
- Lilly and I-5 overpass
- Lilly Road from I-5 to St. Peters
- Ensign Road, St. Peters emergency entrance
- State, from Central to Eastside
- 4th Avenue, Eastside to Central
- Puget, from State to Oak
- San Francisco, East Bay Drive to Quince
- Berry, from East Bay Drive to Arbutus
- East Bay Drive, Ames Road to City limits
- Legion, from Boundary to McCormick
- 7th, Central to McCormick
- 10th, Lybarger to Fir
- Union, from Fir to McCormick
- 11th, Eastside to Boundary

SNOW AND ICE CONTROL WESTSIDE ROUTES

Plow whole route: sand and/or salt curves, hills, bridges, and intersections.

Priority 1: Primary Routes

- 28th Avenue
- Black Lake Boulevard
- Capital Mall Drive
- Cooper Point Road
- Crestline Boulevard
- Division Street
- Elliott Avenue
- Evergreen Park Drive
- Harrison Avenue/Mud Bay Road
- Olympic Way
- Raft Avenue
- West Bay Drive
- Yauger Way (Capital Medical Center)

Priority 2: Secondary Routes

- 14th Avenue/Walnut Road
- 20th Avenue/Elliott
- 21st Avenue, SW
- 4th Avenue W/Hospital Hill
- 9th Avenue, SW
- Carriage Drive/Capital Auto Mall (**High priority from November 28 to December 25**)
- Conger Avenue
- Goldcrest Drive
- Kaiser Road
- Lakemoor/Ken Lake
- Mottman Road
- Park Drive
- Road 65
- RW Johnson

Priority 3: Neighborhood Routes

- 6th Avenue, SW
- Bowman Avenue
- Brawne Avenue
- Bush Avenue
- Cooper Crest Street
- Decatur Street
- Fern Street
- Madison Avenue
- Percival Street
- Rogers Street
- Walnut Loop

SNOW AND ICE CONTROL
EASTSIDE ROUTE

Plow whole route: sand and/or salt curves, hills, bridges, and intersections.

Priority 1: Primary Routes

- 14th Avenue (Fones to Lacey City limits)
- 18th Avenue (Fones to Boulevard Road)
- 4th Avenue E
- Bethel Street
- Boulevard Road (to 18th Avenue)
- Ensign Road
- Fones Road
- Lilly Road
- Martin Way
- Pacific Avenue
- Puget Street
- San Francisco (between Puget and Bethel)
- Sleater-Kinney Road
- State Avenue
- Union Avenue

Priority 2: Secondary Routes

- Herman Road
- Hoffman Road
- Morse-Merryman Road
- Pattison Avenue
- South Bay Road
- Wiggins Road

Priority 3: Neighborhood Routes

- Ames Road
- Central Street
- Miller Avenue
- Phoenix Street
- Pine Avenue
- 26th (Lister to Chehalis Western Trail)
- Allen Road
- Amhurst Street
- Bigelow Avenue
- Craig Road
- Ethridge Avenue
- Greenfield (Hoffman to Kempton)
- Kasey Keller Way
- Kempton Street
- Lister Road
- Marion Avenue
- Wilson Street

SNOW AND ICE CONTROL SOUTH ROUTE

Plow whole route: sand and/or salt curves, hills, bridges, and intersections.

Priority 1: Primary Routes

- 14th Avenue (tunnel and roundabout) **PRIORITY**
- 22nd Avenue, SE
- Adams Street
- Boulevard Road (south of 18th)
- Capitol Boulevard
- East Bay Drive
- Eastside Street
- Henderson Boulevard
- Jefferson Street
- Legion Way
- Plum Street
- Union Avenue

Priority 2: Secondary Routes

- 18th Avenue (Wilson to Boulevard)
- Cain Road
- Carlyon Avenue
- Log Cabin Road
- Maple Park Drive
- North Street
- Wheeler Avenue
- Wilson Street (18th to 22nd)

Priority 3: Neighborhood Routes

- Briggs Drive
- Eskridge Boulevard
- O'Farrell Road
- 5th Avenue (Downtown)
- 8th Avenue (Downtown)
- 11th Avenue (Downtown)
- A Avenue
- Amhurst Street
- Marion Avenue
- Wilson Street
- Beacon Avenue
- Corky Avenue
- Columbia Street
- Eastwood Drive (Fir to Cain)
- Edinburgh Avenue
- Fir Street
- Forest Hill Drive
- Frederick Street
- Governor Stevens Avenue (Fir to Cain)
- Holiday Drive
- Market Street
- Washington Street (11th to Union)
- 28th Avenue (off Boulevard)
- 30th Avenue (Boulevard to Hoffman)

Road Closures and Detours

West Side Hill Closure List

- Lakeridge Drive at top
- Lakeridge Drive at bottom
- Lakeridge Drive and Evergreen Park Drive
- Raft Hill and Harbor View Drive
- Raft Hill and West Bay Drive
- West 4th at Rogers
- West 4th at Sherman
- West 5th at Sherman
- West 4th and Olympic Way
- Sherman and Garfield
- Brawne and Rogers
- Brawne and Foote
- Brawne and Sherman
- Brawne and West Bay Drive
- Elliott Avenue and Crestline Boulevard

East Side Hill Closure List

- San Francisco and Quince
- San Francisco and East Bay Drive
- Berry at Milas
- Berry at East Bay Drive
- Bigelow and Eastside Street
- 7th and McCormick
- 7th and Central
- 10th and Fir
- 10th and Central