

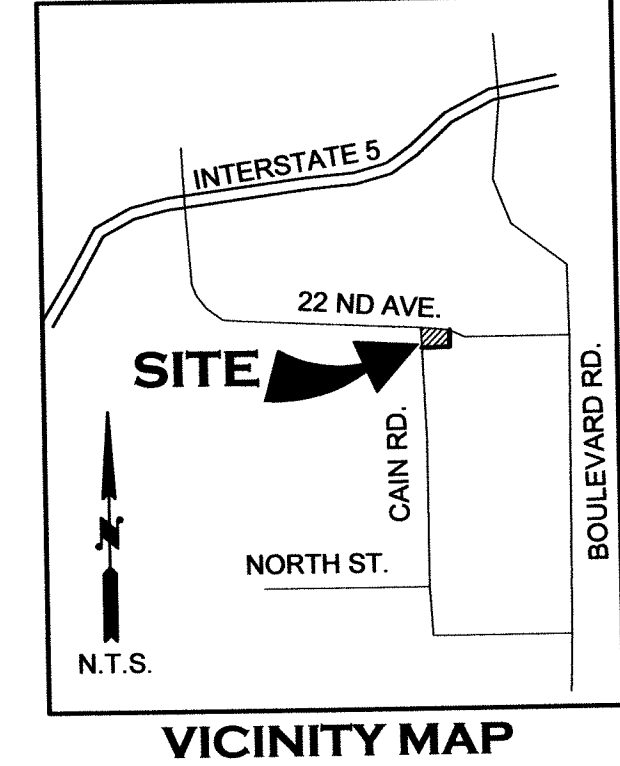
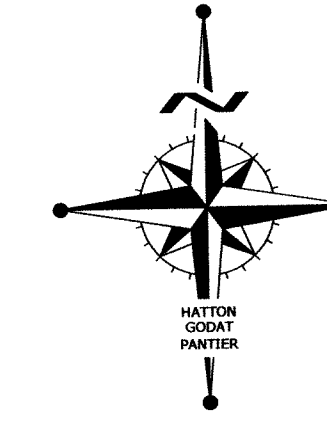
# VILLAGE AT CAIN ROAD

1868 STATE AVENUE, OLYMPIA, WA 98501

**CITY OF OLYMPIA**

<b>VERTICAL DATUM - NAVD83</b> CITY OF OLYMPIA 2" BRASS CAP (LS-46310) TOP OF CONC CURB SE SIDE OF ROUNDABOUT OF BOULEVARD RD & 22nd (TCHP CONTROL POINT #6153) ELEVATION = 205.29	<b>MERIDIAN HORIZONTAL DATUM</b> CITY OF OLYMPIA COORDINATE SYSTEM BASED ON THE NORTH LINE OF WILSON D.L.C. NO. 45
---	---

SCALE: 1" = 40'

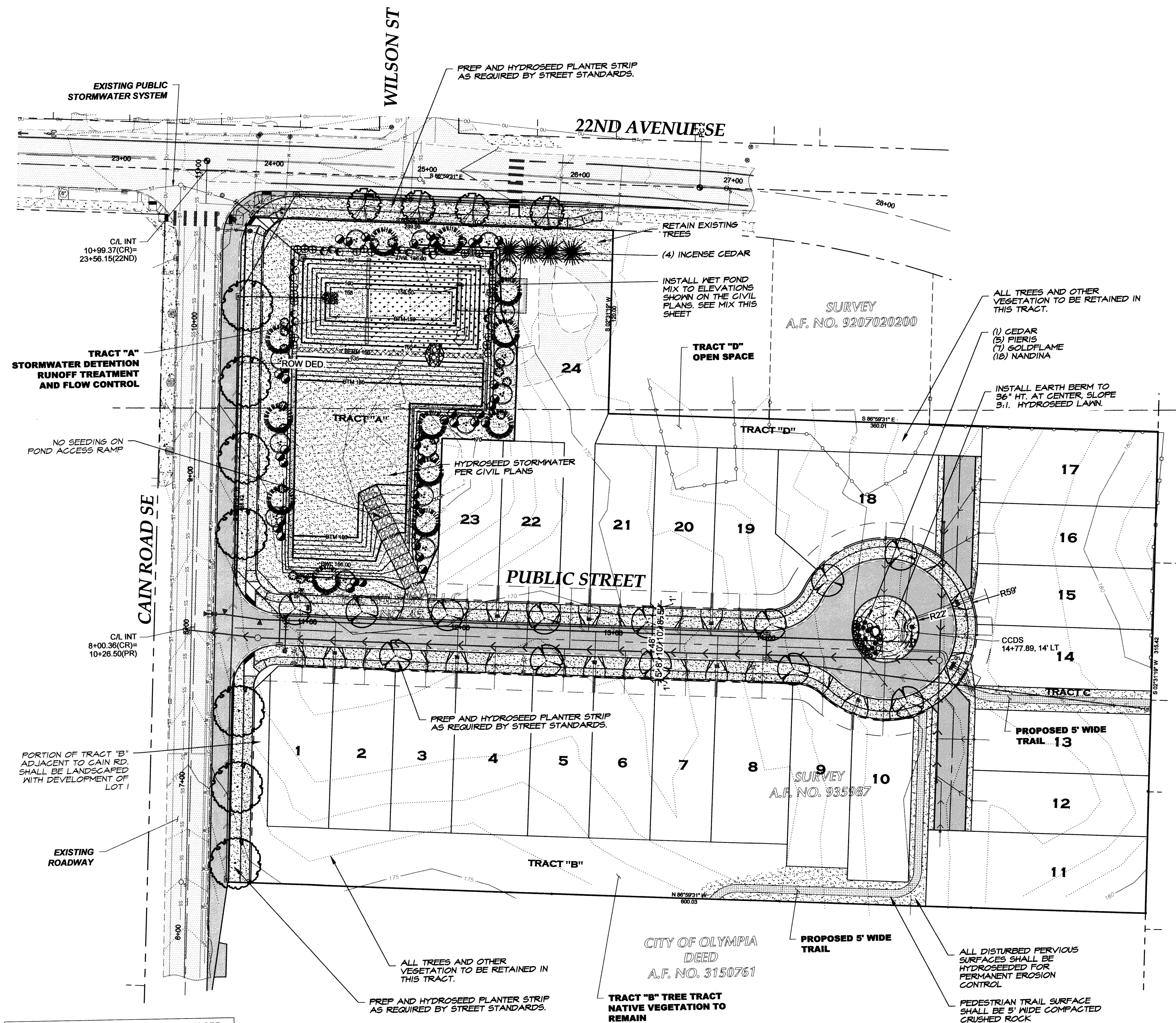


**PREPARED FOR**  
 EVERGREEN HEIGHTS, LLC  
 1868 STATE AVENUE  
 OLYMPIA, WA 98501

DESIGNED BY: CA  
 DRAWN BY: DL  
 CHECKED BY: CA  
 DATE: JUNE 2018  
 SCALE: H 1" = 40'  
 V N/A



**HATTON GODAT PANTIER**  
 AND SURVEYORS  
 ENGINEERS  
 3910 MARTIN WAY E, SUITE B  
 OLYMPIA, WA 98506  
 TEL: 360.943.1599 FAX: 360.357.6299  
 hattonpantier.com



### PLANT SCHEDULE

SYMBOL	BOTANICAL NAME	COMMON NAME	SIZE	SPAC. NOTES	QTY.
	UTILITY TREE <i>Cornus kousa</i>	Kousa Dogwood	2" CAL.	B#B	4
	STREET TREE <i>Acer t. x. Ap. 'Warrenred'</i>	Pacific Sunset Maple	2" CAL.	B#B	7
	<i>Malus x 'Prairifire'</i>	Prairifire Crabapple	2" CAL.	B#B	13
	EVERGREEN TREE <i>Calocedrus decurrens</i>	Incense Cedar	6'-7' HT.	B#B	4
	<i>Chamaecyparis nootkatensis 'Pendula'</i>	Weeping Alaskan Cedar	6'-7' HT.	B#B	1
	SHRUB & GROUNDCOVERS <i>Spiraea bumalda 'Goldflame'</i>	Goldflame Spirea	2 GAL.		7
	<i>Pieris japonica 'Variegata'</i>	Variegated Jap. Pieris	5 GAL.		5
	<i>Nandina dom. Gulf Stream'</i>	Gulf Stream Nandina	3 GAL.		13
	WET POND MIX <i>Spiraea bumalda 'Goldflame'</i>	Goldflame Spirea	2 GAL.	3.5' O.C.	25
	<i>Andromeda polif. 'Blue Ice'</i>	Blue Ice Bog Rosemary	1 GAL.	3' O.C.	30
	<i>Sedum spect. 'Autumn Joy'</i>	Autumn Joy Stonecrop	1 GAL.	3' O.C.	30
	<i>Physocarpus opulifolius</i>	Diablo Purple Ninebark	2 GAL.	3.5' O.C.	25
	<i>Gaultheria shallon</i>	Salal	1 GAL.	3' O.C.	30
		<i>Thuja plicata</i>	Western Red Cedar	6'-7' HT.	
<i>Acer circinatum</i>		Vine Maple	6'-7' HT.		15
<i>Cornus stolonifera</i>		Red-Twig Dogwood	2 GAL.	5' O.C.	21
<i>Rubus spectabilis</i>		Salmonberry	2 GAL.	5' O.C.	20
<i>Physocarpus capitatus</i>		Pacific Ninebark	2 GAL.		22
<i>Vaccinium ovatum</i>		Evergreen Huckleberry	2 GAL.		38

- HYDROSEED LAWN
- LANDSCAPE BOULDERS - 2'-3' BASALT ROCK CLUSTERS

- NOTES:**
- AN IRRIGATION SYSTEM PROVIDING FULL COVERAGE IN ALL LAWN AND SHRUB AREAS SHALL BE INCLUDED IN THIS PROJECT.
  - LANDSCAPING AND IRRIGATION SYSTEM SHALL BE PROFESSIONALLY MAINTAINED FOR THE LIFE OF THIS PROJECT.
  - FINAL PLANT QUANTITIES AND LOCATIONS WILL BE DETERMINED BY FINAL APPROVED LANDSCAPE PLAN

THIS DRAWING DOES NOT REPRESENT A RECORD DOCUMENT, UNLESS CERTIFIED BY HATTON GODAT PANTIER.

ANY ALTERATIONS TO THE DESIGN SHOWN HEREON MUST BE REVIEWED AND APPROVED BY HATTON GODAT PANTIER.

NOTE: THE CONTRACTOR SHALL BE FULLY RESPONSIBLE FOR THE LOCATION AND PROTECTION OF ALL EXISTING UTILITIES. THE CONTRACTOR SHALL VERIFY ALL UTILITY LOCATIONS PRIOR TO CONSTRUCTION BY CALLING THE UNDERGROUND LOCATE LINE AT 811 A MINIMUM OF 48 HOURS PRIOR TO ANY EXCAVATION.

TFW 09840068005  
 VILLAGE AT CAIN ROAD  
 1868 STATE AVENUE, OLYMPIA, WA 98501  
**PRELIMINARY LANDSCAPE PLAN**  
 A PORTION OF THE E.E. & E. 1/4 OF THE SE 1/4 OF SECTION 34, TOWNSHIP 13 NORTH, RANGE 2 WEST, W.M.

AGENCY NO. \_\_\_\_\_  
 SHEET: 1 OF 1  
 E:\landscape\17-000\17-104  
 INDEX: 17-104-lac.dwg  
 JOB: 17-104